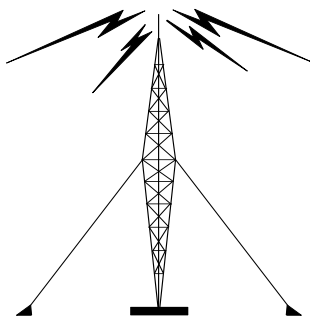


STANDAARDBIJLAGE MARCOM-A



Deze standaardbijlage kan tijdens de MARCOM-A-examens worden geraadpleegd.

Inhoud

Pagina

EGC Safety-net-system	2
Actions by ships upon reception of VHF/MF DSC distress alert	3
Actions by ships upon reception of HF DSC distress alert	4
GMDSS operating guidance for masters of ships in distress situations	5
Telefoon en telex landnummers	6
Inmarsat telefoon en telex toegangsnummers	7
Inmarsat special access codes	7
Inmarsat-C service providers met e-mail faciliteiten	8
Radiotelexcommando's in het automatisch verkeer met kuststations	9
Eerste keus internationale zendfrequenties voor DSC	9
Zendfrequenties voor radiotelefonie-oproepen	9
Radiotelephony intership-frequencies en VHF-channels	10
Radiotelefonie schip/wal-MF-frequenties	10
Radiotelefonie schip/vliegtuig-frequenties in geval van nood- en spoedverkeer	10
NAVAREA-indeling	11

EGC Safetynet-systeem

EGC SAFETYNET SYSTEM

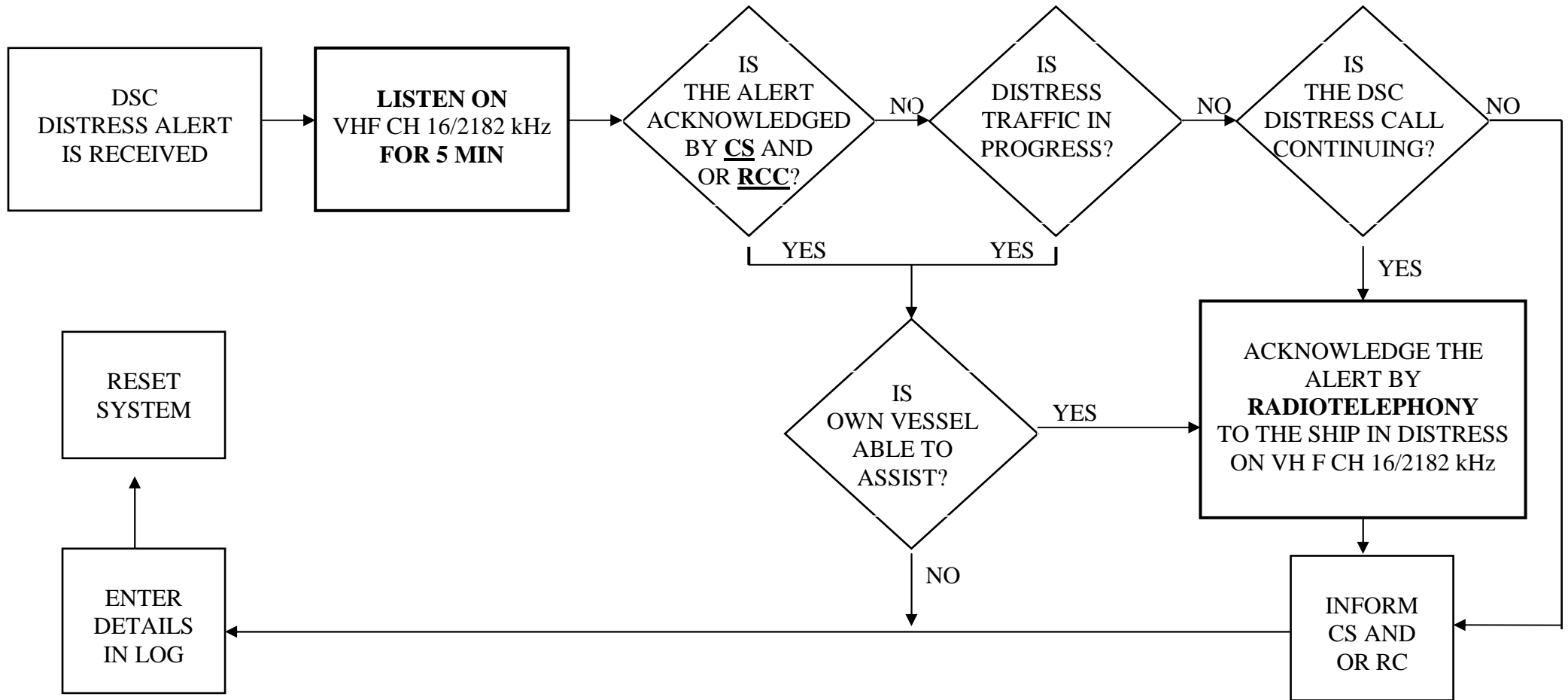
Transmission schedule for full GMDSS service

NAV/MET AREA	NAV information		MET information		Satellite
	Co-ordinator	Times (UTC)	Issuing Country	Times (UTC)	
I	United Kingdom	1730 & as appropriate (AOR-E)	United Kingdom	0930, 2130 (AOR-E) Warnings only (AOR-W)	AOR-E / AOR-W
II	France	1630 (AOR-E)	France	0900, 2100 (AOR-E / AOR-W)	AOR-E / AOR-W
III	Spain	1200, 2400 & on receipt (AOR-E)	Greece ¹	1000, 2200 (AOR-E)	AOR-E
IV	USA	1000, 2200 (0000, 1200 Ice reports N Atlantic)	USA	0430, 1030, 1630, 2230	AOR-W
V	Brazil	0400, 1230	Brazil	0130, 0730, 1330, 1930	AOR-E
VI	Argentina	0200, 1400	Argentina	0230, 1730	AOR-W
VII	South Africa	0940, 1940 (AOR-E) 0040, 1240 (IOR) Réunion 0140, 1340 (IOR) Kerguelen Islands 0330, 1530 (IOR) Mayotte	South Africa	0940, 1940 (AOR-E) 0940, 1940 (IOR) ²	AOR-E / IOR
VIII	India	1000 0040, 1240 Réunion 0330, 1530 Mayotte	India Mauritius / Réunion	0900, 1800 for N of 0° 0130, 1330 for S of 0° 0000 ³ , 0600 ³ , 1200 ³ , 1800 ³ for S of 0°	IOR
IX	Pakistan	0800	Pakistan	0700	IOR
X	Australia	0700, 1900 & on receipt (IOR / POR) 0140 1340 (POR) Nouvelle Calédonie	Australia	1030, 2330 (IOR) W, Casey W 1100, 2300 (POR) N, NE, SE, W, Casey E 0550 LT, 1210 LT, 1645 LT, 2300 LT (POR) Bass Strait only (Coastal Area D)	IOR / POR
XI	Japan	0005, 0805, 1205 (POR / IOR)	China Japan	0330, 1015, 1530, 2215 (IOR) 0230, 0830, 1430, 2030 (POR) for N of 0° 0815, 2015 (POR) ⁴ for S of 0°	IOR / POR
XII	USA	1030, 2230	USA	0545, 1145, 1745, 2345	POR / AOR-W
XIII	Russia	0930, 2130	Russia	0930, 2130	POR
XIV	New Zealand	every 12h & on receipt (POR) 0140 1340 (POR) Nouvelle Calédonie 0030, 1230 (POR) Wallis & Futuna 0250, 1450 (POR) Polynesie Française	New Zealand	0130 LT, 1330 LT (NZ Coast only) 0330, 1530 (Warnings only) 0930, 2130	POR
XV	Chile	0210, 1410, 2210	Chile	1845	AOR-W
XVI	Peru	0519, 1119, 1719, 2319	USA	0515, 1115, 1715, 2315	AOR-W

LT – Local Time

- 1) Scheduled bulletins and warnings for Western Mediterranean Sea are prepared by France
- 2) Forecasts for areas 30°S – 50°E/50°S – 80°E and tropical cyclone warnings are prepared by Réunion
- 3) Tropical cyclone warnings if any issued by Réunion as unscheduled broadcast through AOR-E also
- 4) Scheduled bulletins and warnings for south of the equator prepared by Australia

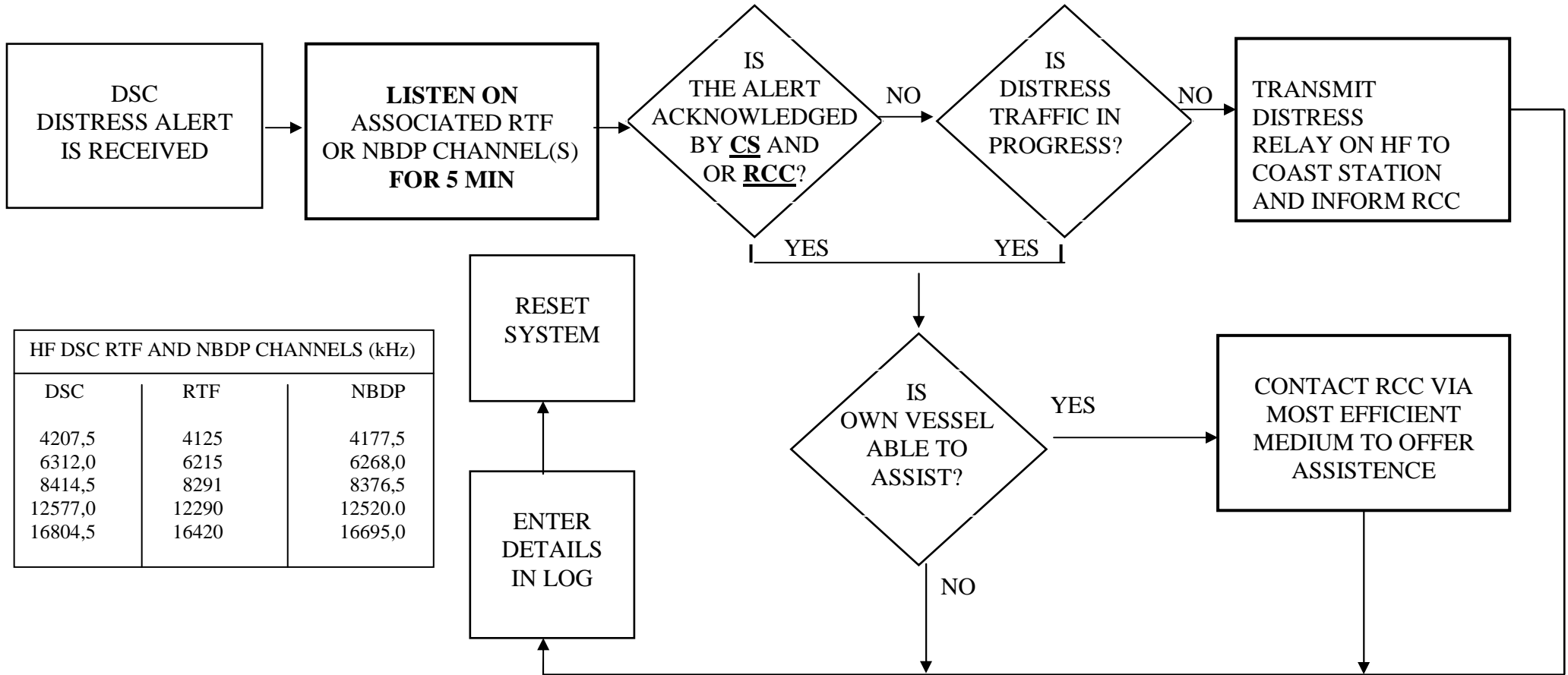
ACTIONS BY SHIPS UPON RECEPTION OF **VHF / MF DSC** DISTRESS ALERT



Note 1: Appropriate or relevant RCC and/or Coast Station (CS) shall be informed accordingly. If further DSC alerts are received from the same source and the ship in distress is beyond doubt in the vicinity, a DSC acknowledgement may, after consultation with an RCC or Coast Station, be sent to terminate the call.

Note 2: In no case is a ship permitted to transmit a DSC distress relay on receipt of a DSC distress alert on either VHF channel 70 or MF channel 2187,5 kHz.

ACTIONS BY SHIPS UPON RECEPTION OF **HF DSC** DISTRESS ALERT



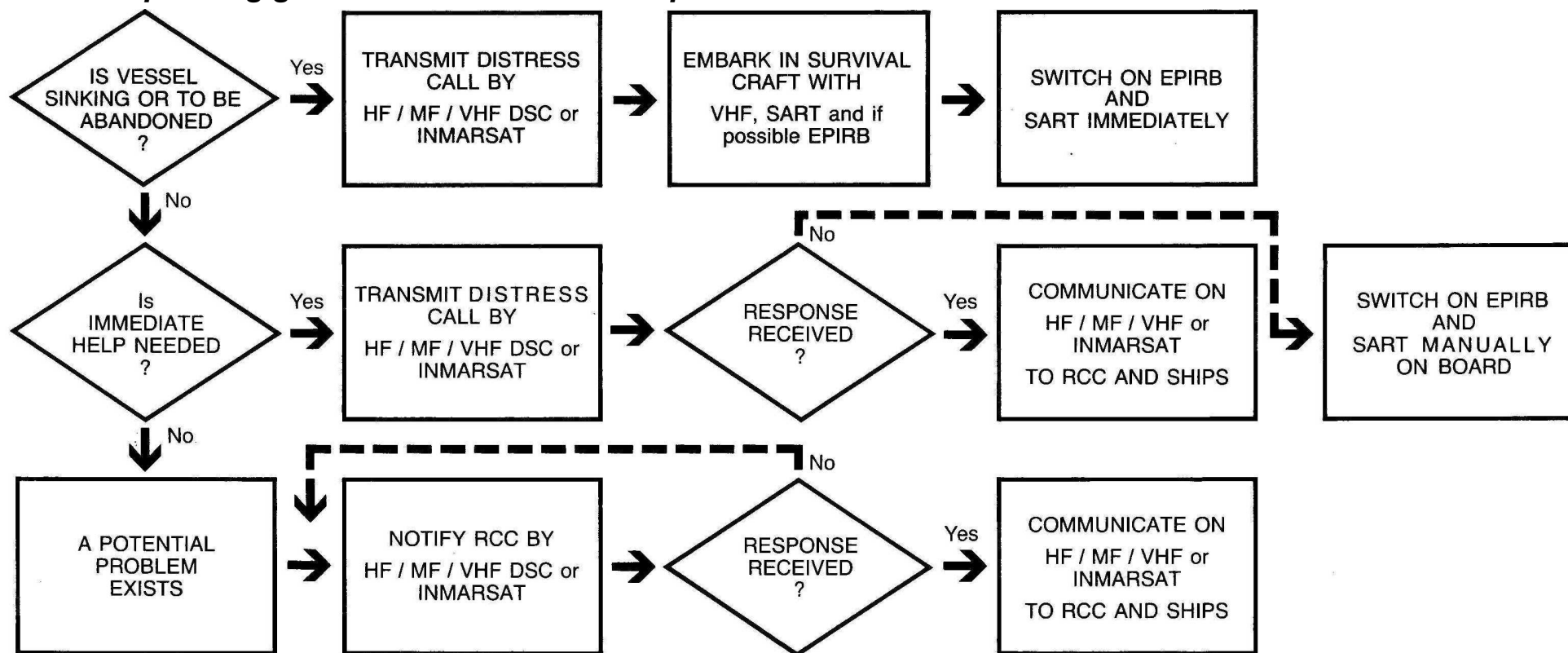
HF DSC RTF AND NBDP CHANNELS (kHz)		
DSC	RTF	NBDP
4207,5	4125	4177,5
6312,0	6215	6268,0
8414,5	8291	8376,5
12577,0	12290	12520,0
16804,5	16420	16695,0

Note 1: If it is clear the ship or persons in distress are not in the vicinity and/or other crafts are better placed to assist, superfluous communication which could interfere with search and rescue activities are to be avoided. Details should be recorded in the appropriate logbook.

Note 2: The ship should establish communications with the station controlling the distress as directed and render such assistance as required and appropriate

Note 3: Distress relay calls should be initiated manually

GMDSS operating guidance for masters of ships in distress situations



1. EPIRB SHOULD FLOAT-FREE AND ACTIVATE AUTOMATICALLY IF IT CANNOT BE TAKEN INTO SURVIVAL CRAFT
2. WHERE NECESSARY, SHIPS SHOULD USE ANY APPROPRIATE MEANS TO ALERT OTHER SHIPS
3. NOTHING ABOVE IS INTENDED TO PRECLUDE THE USE OF ANY AND ALL AVAILABLE MEANS OF DISTRESS ALERTING

RADIO DISTRESS COMMUNICATIONS			
	Digital Selective Calling (DSC)	Radiotelephone	Radiotelex
VHF	Channel 70	Channel 16	
MF	2187.5 kHz	2182 kHz	2174.5 kHz
HF4	4207.5 kHz	4125 kHz	4177.5 kHz
HF6	6312 kHz	6215 kHz	6268 kHz
HF8	8414.5 kHz	8291 kHz	8376.5 kHz
HF12	12577 kHz	12290 kHz	12520 kHz
HF16	16804.5 kHz	16420 kHz	16695 kHz



Publication:
Ministry of Transport, Public Works and Water Management

Telefoon en telex landnummers

Country codes for telephone and telex,											
Destination	Telephone country code	Telex country code	Destination	Telephone country code	Telex country code	Destination	Telephone country code	Telex country code	Destination	Telephone country code	Telex country code
Afghanistan	**	79	Dominica	1	394	Liechtenstein	41	45	Senegal	221	906
Alaska	1	200	Dominican Republic	1	*	Lithuania	370	539	Seychelles	248	965
Albania	355	604	Egypt	20	91	Luxembourg	352	402	Sierra Leone	232	998
Algeria	213	408	El Salvador	503	373	Macedonia (F.Y.R.O.M.)	389	597	Singapore	65	87
American Samoa	684	*	Eritrea			Madeira	351	404	Slovak Republic	42	66
American Virgin Islands	1	208	Estonia	372	537	Macau	853	808	Slovenia	386	598
Andorra	376	590	Ethiopia	25	980	Madagascar	261	986	Spain	34	52
Angola	244	991	Equador	593	308	Malaysia	60	84	St. Christopher Nevis	1	*
Anguilla	1	391	Equatorial Guinea	240	999	Malawi	265	904	St. Helena		
Antartica	672	*	Falkland Islands	**	306	Maldives	960	896	St. Kitts		
Antigua and Barbuda	809	393	Faroe Islands	298	502	Mali	223	985	St. Lucia		
Argentina	54	33	Fiji	679	701	Malta	356	*	St. Martin	590	*
Armenia	374	684	Finland	358	57	Marian Islands	**	760	St. Pierre Miquelon	508	204
Aruba	297	303	France	33	42	Marocco	212	407	St. Tome y Principe	239	*
Ascension	**	939	French Guyana	594	300	Marshall Islands	**	765	St. Vincent & the Grenadine	1	399
Australia	61	71	French Polynesia	689	702	Martinique	596	298	Solomon Islands	677	778
Austria	43	47	Gabonese Republic	241	973	Mauretania	222	974	Somalia	252	900
Azerbaijan	7	784	Gambia	220	996	Mauritius	230	966	South Africa	27	*
Azores	351	404	Georgia	995	683	Mayotte	269	935	Spitsbergen	**	56
Bahamas	1	297	Germany	49	41	Mexico	52	22	Sri Lanka	94	803
Bahrain	973	490	Ghana	233	94	Micronesia	**	764	Sudan	249	984
Bangladesh	880	780	Gibraltar	350	405	Moldova	373	682	Surinam	597	304
Barbados	1	393	Greece	30	601	Monaco	33	42	Swaziland	268	964
Belgium	32	46	Greenland	299	503	Mongolia	**	800	Sweden	46	54
Belize	501	371	Grenada	1	395	Montserrat	1	396	Switzerland	41	45
Benin	229	972	Guadeloupe	590	299	Mozambique	258	992	Syria	963	492
Bermuda	1	290	Guam	671	700	Myanmar	95	83	Tadjikistan	7	787
Bhutan	975	*	Guatemala	502	372	Namibia	264	908	Taiwan	886	769
Bolivia	591	*	Guinea Bisseau	245	969	Nauru	674	775	Tanzania	255	989
Bosnia Hercegovina	38	62	Guinea Republic	224	995	Nepal	977	891	Thailand	66	86
Botswana	267	962	Guyana	592	295	The Netherlands	31	44	Togo	228	977
Brazil	55	38	Haiti	509	203	Netherlands Antilles	599	390	Tonga	**	777
British Virgin Islands	1	292	Hawaii	1	*	New Caledonia	687	706	Trinidad	1	294
Brunei	673	809	Honduras	504	374	New Zealand	64	74	Tunisia	216	409
Bulgaria	359	67	Hong Kong	852	802	Nicaragua	505	375	Turkey	90	600
Burkina Faso			Hungary	36	61	Niger	227	975	Turkmenistan	7	789
Burundi	257	903	Iceland	354	501	Nigeria	234	905	Turks & Caicos Islands	1	296
Byelorussia (White Russia)	7	681	India	91	81	Niue Islands	683	*	Tuvalu	**	774
Cambodia	855	807	Indonesia	62	73	Norfolk Islands	672	766	Uganda	256	988
Cameroon	237	*	Iran	98	88	Norway	47	56	Ukraine	**	680
Canada	1	21/26	Iraq	964	491	Oman	968	498	United Arab Emirates	971	893
Cape Verde	238	993	Ireland	353	500	Pakistan	92	82	United Kingdom	44	51
Cayman Islands	1	293	Israel	972	606	Palau	**	763	Uruguay	598	32
Central African Republic	236	971	Italy	39	43	Panama	507	*	USA (domestic)	1	*
Chad			Ivory Coast	225	983	Papua New Guinea	675	703	Uzbekistan	7	786
Chile	56	34	Jamaica	1	291	Paraguay	595	305	Vanuatu	678	771
China	86	85	Japan	81	72	Peru	51	36	Vatican City State	39	504
Christmas Islands	672	766	Jordan	962	493	Philippines	63	*	Venezuela	58	31
Cocos Islands	61	71	Kazakhstan	7	785	Pitcairn Islands	**	*	Vietnam	84	805
Colombia	57	35	Kenya	254	987	Poland	48	63	Yemen	967	895
Comoros	269	*	Kiribati	686	*	Portugal	351	404	Yugoslavia	381	62
Congo	242	981	Korea, democr. peoples rep	**	*	Puerto Rico	1	*	Zaire	243	982
Cook Islands	682	772	Korea, republic	82	801	Qatar	974	497	Zambia	260	902
Costa Rica	506	376	Kuwait	965	496	Réunion	262	961	Zimbabwe	263	907
Croatia	385	599	Kyrgyzstan	7	788	Romania	40	65			
Cuba	53	28	Laos	**	*	Russia	7	64			
Cyprus	357	605	Latvia	371	538	Rwanda	250	909			
Czech Republic	42	66	Lebanon	961	494	Samoa	684	*			
Denmark	45	55	Lesotho	266	963	San Marino	39	505			
Diego Garcia	**	938	Liberia	231	997	San Vincent	1	399			
Djibouti	253	979	Libya	218	901	Saudi Arabia	966	495			

* multiple codes; different country codes apply for these networks. Please call our Customer Services for further information.
 ** operator only, use two digit code 11.

Inmarsat telefoon en telex toegangsnummers

<i>Telephone and telex region access codes</i>			
<i>Afkorting</i>	<i>Naam</i>	<i>Telefoon</i>	<i>Telex</i>
AOR-W	Atlantic Ocean Region West	870	584
AOR-E	Atlantic Ocean Region East	870	581
IOR	Indian Ocean Region	870	583
POR	Pacific Ocean Region	870	582

Inmarsat special access codes

<i>2-digit or Special Access Code Telex Services (Inmarsat)</i>			
2-digit		2-digit	
Code	Service	Code	Service
00	Automatic	33	Technical Assistance
11	International Operator	36	Credit Card Call
12	International Information	37	Time and Duration
13	National Operator	38	Medical Assistance
14	National Information	39	Maritime Assistance
15	Radio Telegram Service	41	Meteorological Reports
17	Telephone Call Booking	42	Navigational Hazards and Warnings
21	Store and forward (International)	43	Ship Position Reports
22	Store and forward (National)	678	TR
23	Abbreviated Dialling (Short Code Selection)	70	Databases
31	Maritime Enquiries	91	Automatic Line Test
32	Medical Advice	92	Commissioning Tests

<i>2-digit or Special Access Code Telephone Services (Inmarsat)</i>			
2-digit		2-digit	
Code	Service	Code	Service
00	Automatic	35	Collect Call
11	International Operator	36	Credit Card Call
12	International Information	37	Time and Duration
13	National Operator	38	Medical Assistance
14	National Information	39	Maritime Assistance
17	Telephone Call Booking	41	Meteorological Reports
20	Access to a Maritime PAD	42	Navigational Hazards and Warnings
23	Abbreviated Dialling (Short Code Selection)	43	Ship Position Reports
31	Maritime Enquiries	70	Databases
32	Medical Advice	91	Automatic Line Test
33	Technical Assistance	92	Commissioning Tests
34	Person-to Person Call		

The listed 2-digit code (Special Access Code) telex/telephone services, may be supported by individual CES's in the Inmarsat-B and Inmarsat-C networks, depending on their policy. To find out the services supported by a particular CES, contact the CES directly.

Inmarsat-C service providers met e-mail faciliteiten

1	2				3	4	5	6	7
Service Provider	Land/Coast Station ID				Internet Address Command	Internet Mail Address		Ship-to-Shore address	Contact Info
	AOR -W	AOR -E	PO R	IOR		Type	Value	"Imn=Inmarsat Mobile Number"	
BT	002	102	202	302	TO+	SPECIAL	67	imn@csat.bt.com or imn@satmail.bt.com	Tel: +44 1278 772 342 Fax: +44 1278 772 222 e-mail: satmail@satmail.bt.com
Example via BT:	TO+ Maritime_Applications@Inmarsat.org "enter message text"								
COMSAT	001	101	201	333 *	TO:	SPECIAL X.25	INET 26245880793037 *(IOR ONLY)	imn@c-link.net	Tel: +1 301 214 3025 Fax: +1 301 214 7284 e-mail: cmcsales@comsat.com
Example via Comsat:	TO: Maritime_Applications@Inmarsat.org "enter message text"								
T-MOBIL	001	115	201	333	TO:	X.25	26245231025010	imn@inmarsat.de or imn@shamrock.de	Tel: +49 228 936 6511 Fax: +49 228 936 6539 e-mail: inmarsat@t-mobil.de
Example via T-Mobil:	TO: Maritime_Applications@Inmarsat.org "enter message text"								
TELSTRA	022	122	222	322	INET:	SPECIAL	28	imn@telstra.ves.net	Tel: +61 754 909090 Fax: +61 754 909094 e-mail: custsvc@qciemsrl.telstra.com.au
Example via Telstra:	INET: Maritime_Applications@Inmarsat.org "enter message text"								
Stratos	012	112	212	312	TO:	SPECIAL	28	imn@c.xantic.net	Tel: +31 70 343 4543 Fax: +31 70 343 4796 e-mail: service@xantic.net
Example via Burum:	TO: Maritime_Applications@Inmarsat.org STX: "enter message text"								
STRATOS	022	122	222	322	INET:	SPECIAL	633333	imn@stratosmobile.net	Tel: +1 709 748 4233 Fax: +1 709 748 4305 e-mail: register@stratosmobile.net
Example via Stratos:	INET: Maritime_Applications@Inmarsat.org "enter message text"								

Radiotelexcommando's in het automatisch verkeer met kuststations

Commando	Betekenis
OPR+	Verzoek om assistentie van de operator.
URG+	Onmiddellijk de operator in verband met nood- of spoedverkeer.
HELP+	Voor het verkrijgen van een opgave van de beschikbare diensten.
INF+	Voor het verkrijgen van informatie omtrent de werkwijze van het kuststation.
DIRTLX.....+	Voor het automatisch doorkiezen voor een radiotelexgesprek met een walabonnee.
TLX.....+	Voor verzending van een telexbericht in het <i>store and forward</i> -systeem van het kuststation.
STA.....+	Status opvragen van de in de afgelopen 48 uur verzonden <i>store and forward</i> -berichten.
FAX.....+	Verzoek voor verzending van een faxbericht via het aangegeven nummer.
MSG+	Voor het opvragen van berichten die het kuststation eventueel voorhanden heeft. Verzend uw bericht.
MAN+	Voor het verzenden van een bericht aan een telexabonnee, die niet is aangesloten op een automatisch telexnet.
WX+	Voor het opvragen van een weerbericht.
TEST+	Voor het opvragen van de <i>fox message</i> .
MED+	Voor een verzoek om radiomedisch advies.
TGM+	Voor het verzenden van radiotelegrammen en/of teleberichten.
AMV+	Voor het verzenden van amver- en soortgelijke berichten.
FREQ+	Voor het aanvragen van een sked.
OBS+	Voor het verzenden van OBS-telegrammen.
POS+	Voor het overbrengen van een TR.
BRK+	Voor het afbreken van de radioverbinding.
RTL+	Voor het verzenden van <i>radio telex letters</i> .
SVC+	Voor het verzenden van dienstmededelingen.

Eerste keus internationale zendfrequenties voor DSC

Band (MHz)	Schip (kHz)	Kuststation (kHz)
2	2189,5	2177 ¹
4	4208	4219,5
6	6312,5	6331
8	8415	8436,5
12	12577,5	12657
16	16805	16903
18	18898,5	19703,5
22	22374,5	22444
25	25208,5	26121

Zendfrequenties voor radiotelefonieoproepen

Band (MHz)	Schip (kHz)	Kuststation (kHz)
4	4125	4417
6	6215	6516
8	8255	8779
12	12290	13137
16	16420	17302
18	18795	19770
22	22060	22756
25	25097	26172

¹ Dit is tevens de zendfrequentie voor DSC voor schip/schipoproepen

Radiotelephony intership-frequencies en VHF-channels

frequencies in kHz							VHF-channels
2263	2323	2383	2443	3340			
2266	2326	2386	2446	3343			6
2269	2329	2389	2449	3346			8
2272	2332	2392	2452	3349			9
2275	2335	2395	2455	3352			10
2278	2338	2398	2458	3355			13
2281	2341	2401	2461	3358			15
2284	2344	2404	2464	3361			17
2287	2347	2407	2467	3364			67
2290	2350	2410	2470	3367			69
2293	2353	2413	2473	3370			72
2296	2356	2416	2476	3373			73
2299	2359	2419	2479	3376			77
2302	2362	2422	2482	3379			
2305	2365	2425	2485	3382			
2308	2368	2428	2488	3385			
2311	2371	2431	2491	3388			
2314	2374	2434	2494	3391			
2317	2377	2437		3394			
2320	2380	2440		3397			
4146	6224	8294	12353	16528	18825	22159	25100
4149	6227	8297	12356	16531	18828	22162	25103
	6230		12359	16534	18831	22165	25106
			12362	16537	18834	22168	25109
			12365	16540	18837	22171	25112
				16543	18840	22174	25115
				16546	18843	22177	25118

Radiotelefonie schip/wal-MF-frequenties

2045 kHz
2048 kHz ²
2051 kHz
2054 kHz
2057 kHz

Radiotelefonie schip/vliegtuig-frequenties in geval van nood- en spoedverkeer

3023 kHz
4125 kHz ³
5680 kHz
VHF-channel 6
VHF-channel 16
121,5 MHz
123,1 MHz ⁴

² Tevens voor internationaal schip/schip-verkeer

³ The priority of use for ship-aircraft communication.

⁴ May be used for intercommunication when engaged in co-ordinated search and rescue operations.

NAVAREA-indeling

